

Core Schedule

It's About Time

A comprehensive rostering tool for Healthcare Professionals that ensures high-quality service, increased productivity, and improved employee satisfaction.

We help create safe and efficient work environments by scheduling the right people in the right place at the right time;

Someone's life depends on it.



Don't get clocked in the face by mismanagement

Ineffective rostering systems result in medical professionals being overworked and stressed, and wasting time. This leads to errors and potential risks to healthcare patients. Protect your staff and patients with effective, efficient and reliable rostering.

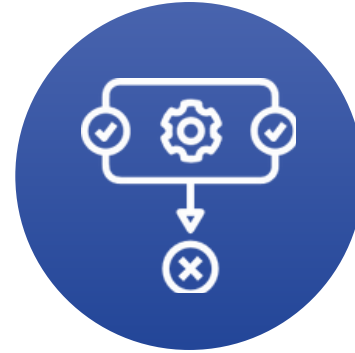
Healthcare Management is advancing - beyond spreadsheets!



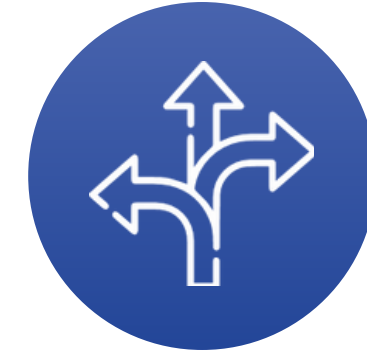
Manage staff scheduling with ease



Save time
and money



Eliminate
errors



Tailored and
flexible



Manage complex rules
& leave requests



Adapt to new
processes in time

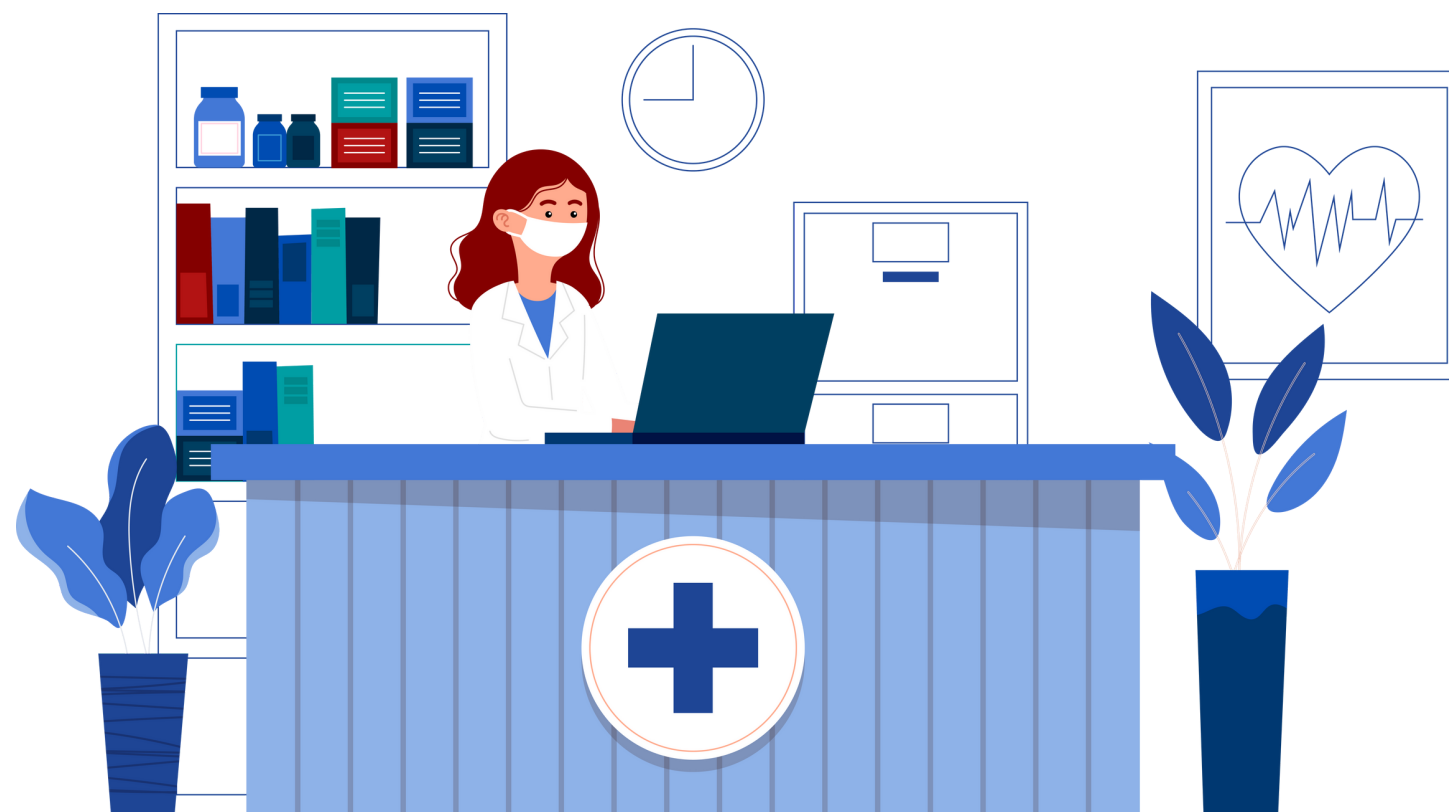


Keep everything fair
and accessible

Empowering a safe workplace

Designed for healthcare from the ground up

- ✓ Highly customisable to meet your unique requirements
- ✓ Easily manage complex rules and staff requests
- ✓ No on-premises infrastructure required
- ✓ No need for external storage, backup, or disaster recovery solution requirements
- ✓ No need for workstation configuration / endpoint management
- ✓ Maintains platform & data security
- ✓ Safe & compliant



Our Story

Stephen C. Pool, MD FACEM, our CEO, is an Emergency Physician and knows first-hand how over-complicated and time consuming healthcare rostering can be. His mission to simplify staff rostering has led to Core Schedule expanding throughout the healthcare industry in the United States, New Zealand and Australia.

2010

Stephen Pool creates Core Schedule in New York City to roster his own group

2014

Core Schedule is established in New Zealand

2017

Wellington becomes the Global HQ to Core Schedule with accounts in United States, New Zealand and Australia

2018

\$1M in capital raised

2021

Core Schedule is the #1 ED roster program in New Zealand and Australia

2022

We now have 14 employees & going strong!

Our Core Values



People First

We understand the healthcare industry, and care about the lives of healthcare professionals



Inclusive

We celebrate diversity at Core Schedule, and herald freedom and rights for all



Respectful

We work with integrity, honesty and professionalism



Meaningful

We take the time to truly understand your unique requirements - tailoring our solution to suit you and your staff



Real

Authenticity and transparency is how we work with each other and is part of our product and methodology

Key features

Versatile View Options

Individual, Unit or Calendar views with custom attributes like pay period, call availability, user stats such as number of hours vs. FTEs, Sheets credentials, and more

Integration

Processes simplified further with integration and APIs

Views

Arrange rosters with custom sheets, with TV screen display abilities.

Reporting

Reporting made simple with complete visibility

Management

Manage shift changes, trades and leave requests with ease

Communication

No more bulk emails or back and forths.

Planning

Taking the headache out of rostering

Safety

Ensuring a safe and stress-free environment for staff and patients.



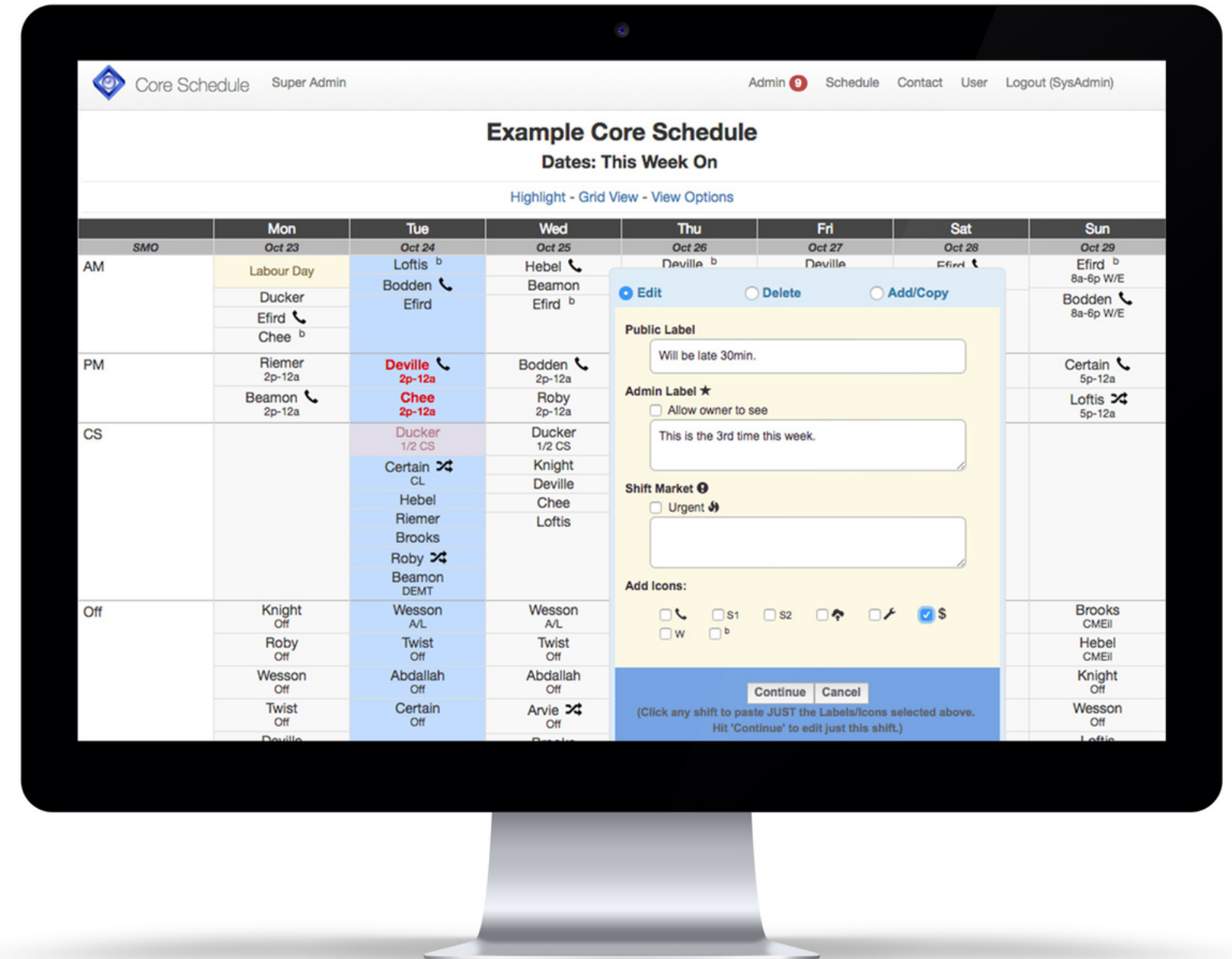
Versatile View Options

	Mon, 23-Oct	Tue, 24-Oct	Wed, 25-Oct	Thu, 26-Oct	Fri, 27-Oct	Sat, 28-Oct	Sun, 29-Oct	Mon, 30-Oct	Tue, 31-Oct	Wed, 01-Nov	Thu, 02-Nov	Fri, 03-Nov	Sat, 04-Nov	Sun, 05-Nov	Mon, 06-Nov	Tue, 07-Nov	Wed, 08-Nov	Thu, 09-Nov	Fri, 10-Nov
Date Notes																			
Adrian		Off	Off	CS					D	E+			Off	Off	Off	Off	E+	A/L	A/L
Anderson	Off	Off	Off	Off	Off	Off	Off	Off	A/L	A/L	Off	Off	Off	Off	Off	Off	Off	Off	Off
Billy		D	E+	CS		W/E D	W/E D	Off	A/L	A/L	Off	Off	Off	Off	E+		CS	CS	D
Brain	Stat	CS	Off	Off	CMEI	CMEI	CMEI	CME	CME	CME	CMEI	CMEI	Off	Off	1/2 D	E+	CS		W/E E+
Branden	E+	DEMT	D	CS	Off	Off	Off	E+	DEMT	D	CS	W/E E	W/E E	W/E E	Off	DEMT	D	CS	
Collin	Off	Off	Off	CS	W/E E	W/E E	W/E E	E+			CS	D	Off	Off	A/L	A/L	Off	CS	Off
Cory	D	E+	CS	D				E+	CS	D	A/L	Off	Off	Off	Off	A/L	A/L	A/L	Off
Darryl	Off	E+	CS	D	D	Off	Off	E+	CS	D	D	Off	Off	Off	E+	CS	Off	Off	Off
Dillon	D	1/2 CS	1/2 CS	D	A/L			A/L	1/2 CS	1/2 CS	D	D	Off	Off	A/L	1/2 CS	1/2 CS	D	D
Erin	D	D	D	E+		W/E D	W/E D			S/L	S/L	S/L	Off	Off	D	D		E+	
Hobert				D						D									D
Homer	Stat	CS	D	CL		CMEI	CMEI	CME	CME	CME	CME	CME	CMEI	CMEI	A/L	CS	D	CL	
Keven	Off	Off	CS	Off	Off	Off	Off	D					W/E D	W/E D				D	
Lucas		D	CS	E+	W/E E+				A/L		E+	D			D	E+	CS		
Mike				D	D	W/E E	W/E E				D		W/E E	W/E E				D	
Rory	Off	CS	E+		D	Off	Off	D	D	E+	D	DEMT	Off	Off	D	DEMT	CME	CME	CME
Rupert	E+	CS						D	Off	Off	Off	W/E E			E+	CS	D	D	
Tristan	Off	Off	Off	Off	Off	Off	Off	Off	Off	Off	Off	Off	Off	Off	Off	Off	Off	Off	Off
Wallace	Off	A/L	A/L	A/L	A/L	Off	Off	D-	D-	E+	A/L	Off	Off	Off	D-	D-	E+	CS	
Day	3	3	3	5	3	2	2	3	3	3	5	4	2	2	3	3	3	5	4
Eve Non Call	1	1	1	1	1	1	1	1	1	1	1	1	1	1	1	1	1	1	1
Eve On call	1	1	1	1	1	1	1	1	1	1	1	1	1	1	1	1	1	1	1
Comments			Covered					ACEP DC		Exam							Bill Gone		

- Calendar View
 - Versatile and customisable, providing shift information at a glance,
 - with unlimited icons available to indicate anything required
- Individual View
 - Allows users to view shifts with the ability to display up to 6 months of a schedule - can be layered with colleague's rosters to view/compare shift availability.
- User Options
 - Allows users to easily add undertime, overtime, trade or split shifts, or add it to
- Grid View Shift Market
 - Highly customisable with various attributes like pay period, call availability, user
- Unit View
 - View multiple departments or hospitals, all separated and controlled individually

Labels & Icons

- Public, admin and user labels available
- Labels, admin (only visible to admin) owner of shift to also see the admin label
- Allows users to advertise a shift on the shift market
- Ability to add unlimited amount of icons
- Information can be visible to admins only, users or anyone with login access



Daily Sheets

- Photo Boards - TV displays with the ability to rotate, highlighting where staff on shift are allocated. Customisable to show on-call shifts, unavailable staff members
- Call Center Sheet - Visibility of who is on call across multiple departments
- Multiple Shifts - See which staff member is working on what shift and on what job
- Team Breakdown - Detailed sheet of each team member's allocation rosters
- Clinic/Room View - Combined view for call roster, pulling from multiple rosters to collate on one page, allowing to assign staff to areas. Highly customisable



Management

Manage shift changes, trades and leave requests with ease.

- Trades - Users initiate shift trade emails for staff to simply confirm or deny, automatically checked against rules
- Audit Trail - Check the trade history of any shift, know how it has been transferred, to whom, and by whom
- Find Coverage - Empowers users to take responsibility for their schedule and trade management
- Shift Market - Users can advertise their shift as available for trade, including urgency and reason - this on suitably qualified users' schedules upon login
- Group SMS - Send SMS notifications to specific staff based on any rule, credentials, and certification

Planning

Taking the headache out of rostering.

- Plan against unexpected leave
- Schedule each day in real-time with self-rostering tools
- Approve leave and shift requests with a click
- Unlimited attributes such as credentials, awards, hours worked and user preferences
- Shift count and staff ratios
- Forecasting
- Contract and trainee rotation management
- Roster display – Calendar | Grid | Individual



Safety & Compliance

Ensuring a safe and stress-free environment for staff and patients

- Safety Scan - Provides detailed list of all violations & warning notifications. Can be automatically run and emailed directly daily
- Core Allocation - Track trainee rotations across multiple facilities, run assignment requests, generate picture sheet of all staff assigned to a run & instant unfulfilled rotation count
- Operating Theatre View - Break down OT rooms, combine surgeons & anaesthetists into rooms. Safety scans for double booking, unsupervised trainees and changes to the schedule
- Core Contingencies - Create multiple roster versions, change or move roster dates, replace any roster with a different version at short notice, compare roster versions to see required FTE and other metrics
- Automated Safety & Compliance Scans



Reporting

Tailored reporting made simple with complete visibility.

- Custom Reporting - Report by name, shift break down, clinic/non clinical, leave and much more
- Contract Reporting - User, FTE, clinical and non Clinical, hours worked against contract
- Report the CTC of each roster
- On-call visibility
- Dashboard - Customised to your preferences; e.g. today's schedule and their assignments, unfilled shifts for the next period, unapproved leave and time pending
- Call Dashboard - Visibility of who is on call, includes phone icons to easily initiate calls

Communication

No more bulk emails or back and forths.



Group
notifications



SMS shift
confirmations



On screen editing
+ in-app
messaging



Shift Market
alerts



Shift labels
and icons

Integrations

Processes simplified further with integration and APIs.

- Azure Active Directory
- Award Interpretation
- Demand Management
- API Access to Reach, Create, and Update Integration
- Messaging App for Healthcare
- Microsoft Partner



Customer Journey



Project Sign Off

- Agreement Signed
- Billing Finalized
- Handover to Pre-Onboarding



Pre-Onboarding

- Welcome Pack
- Information Gathering Kick-off Call
- Understanding Client's Unique Requirements
- Provide Delivery Timeline



Site Build

- Intro to Site
- Admin Launch
- User Launch
- Configuration Calls
- Site Built
- Admin Walkthrough



Launch

- Training
- User Launch Planning
- User Launch



Account Management

- Quarterly Business Reviews
- Strategy Sessions
- Onboarding Review

Customer Spotlight

We started the Emergency Department at the Royal Adelaide Hospital after a successful rollout in the ED, we were approached by the Central Adelaide Local Health Network (CALHN) for their COVID Response Project.

It took:

3 WEEKS
IMPLEMENTATION

600
FTEs

15
AREAS

We now continue to roll Core Schedule all across CALHN's additional services with the aim to be operational across 100 services and 2,500 FTEs

Why Choose Us?

- Tailored for you and your team
- Manage complex rules and staff requests
- Saves you time and money
- Eliminates errors
- Adapts to new processes as you change them
- Fair, flexible and accessible
- Highly customised to your unique requirements
- No on-premises infrastructure required
- No need for external storage, backup or disaster
- Recovery solution requirements
- Maintains platform & data security
- Safe & compliant
- Ongoing support from the Core Schedule team



Who We Serve



Hospitals
and
Healthcare



Community and
Aged Care



Emergency
Services



Fly-in / Fly-
out
Workforces



Aeromedical



Any 24/7,
Shift-based
Complex
Workforce

We are trusted by

New Zealand

Te Whatu Ora
Health New Zealand
Taranaki

Te Whatu Ora
Health New Zealand
Te Toka Tumai Auckland

Te Whatu Ora
Health New Zealand
Te Tai o Poutini West Coast

Te Whatu Ora
Health New Zealand
Waitematā

Te Whatu Ora
Health New Zealand
Waitaha Canterbury

Te Whatu Ora
Health New Zealand
Lakes

Te Whatu Ora
Health New Zealand
Counties Manukau

Te Whatu Ora
Health New Zealand
Nelson Marlborough

Te Whatu Ora
Health New Zealand
Capital, Coast and Hutt Valley

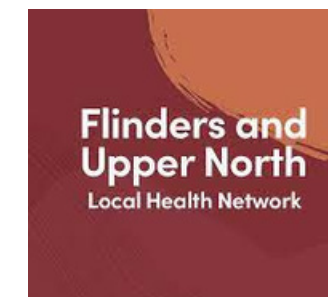
Te Whatu Ora
Health New Zealand
Whanganui

Health New Zealand
Hauora a Toi Bay of Plenty



We are trusted by

Australia



We are trusted by

The US



Client Testimonial

“..a great and user-friendly rostering system. What stands out though is the fantastic support that the Core team provides.”



- Dr. Andrew Spiller,
Deputy Director
Emergency Medicine,
Logan Hospital,
Brisbane

“Implementing Core Schedule in our ER has been life changing and I cannot recommend (it) enough.”



- Diana Giasullo,
RN, Griffin Hospital

“Core Schedule has allowed me... to easily maintain an even number of doctors rostered on each shift.”



- Dr. Andrew Spiller,
Deputy Director
Emergency Medicine,
Logan Hospital, Brisbane



CORE SCHEDULE

People ✦ Essential




Reach out for
more information

 [CoreSchedule.com](https://www.CoreSchedule.com)

 sales@CoreSchedule.com

 +64 27 529 1224

 +61 7 3558 2011

 +1 917 355 3553